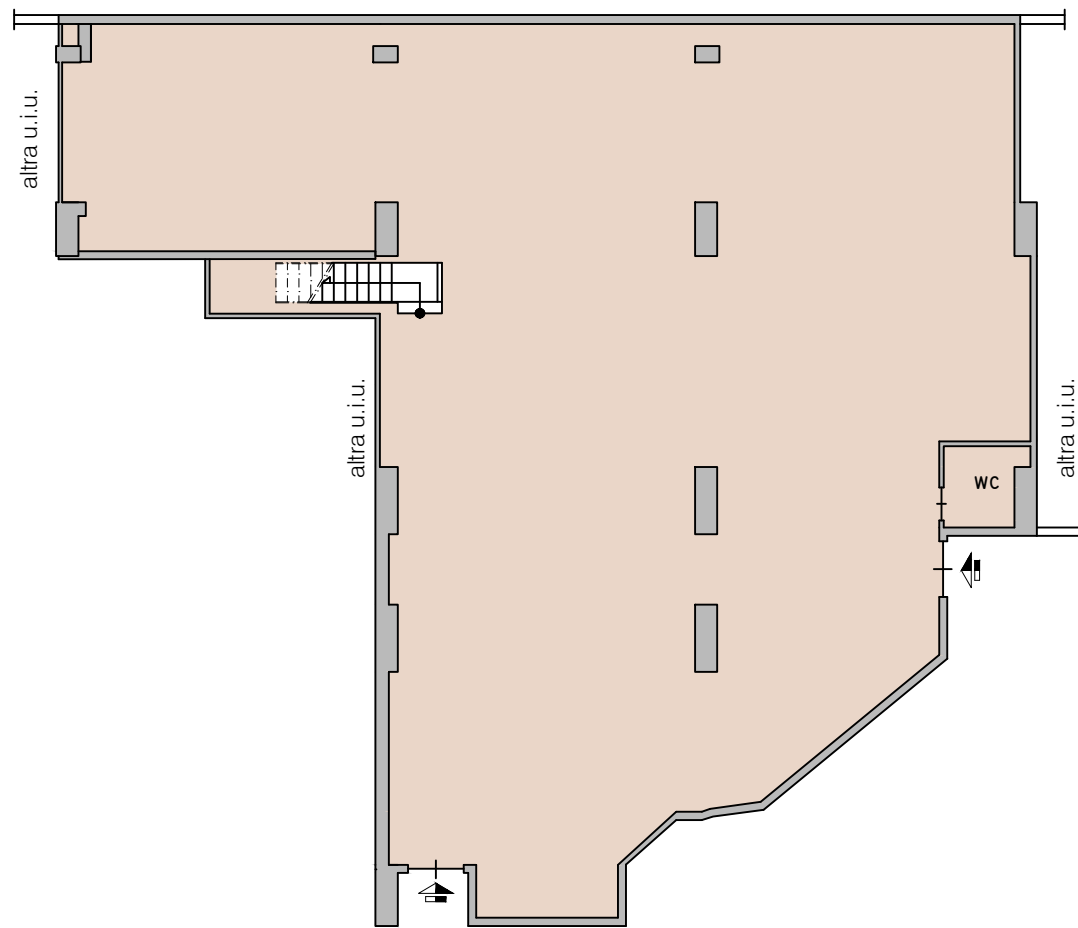




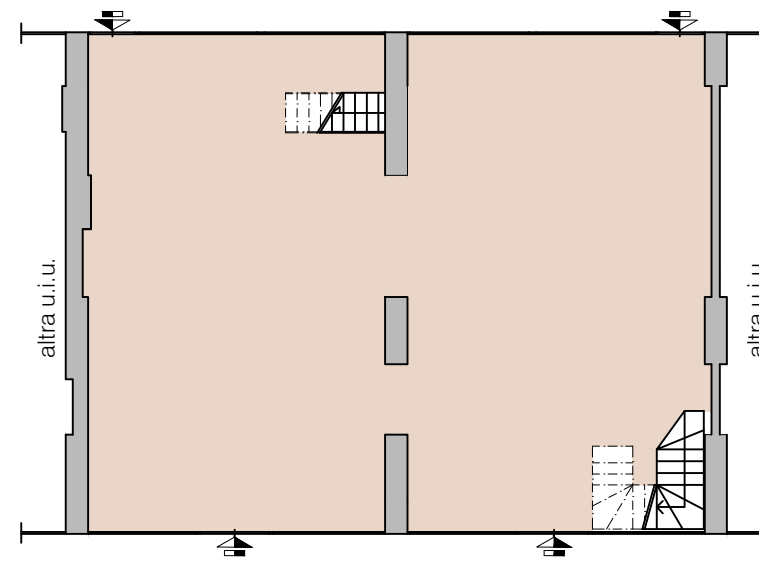
Napoli  
Centro Direzionale - Isola "G5"  
Locale Commerciale - Progetto -  
Piani Sottonegozio, Terra e Soppalco  
Ipotesi 600 mq



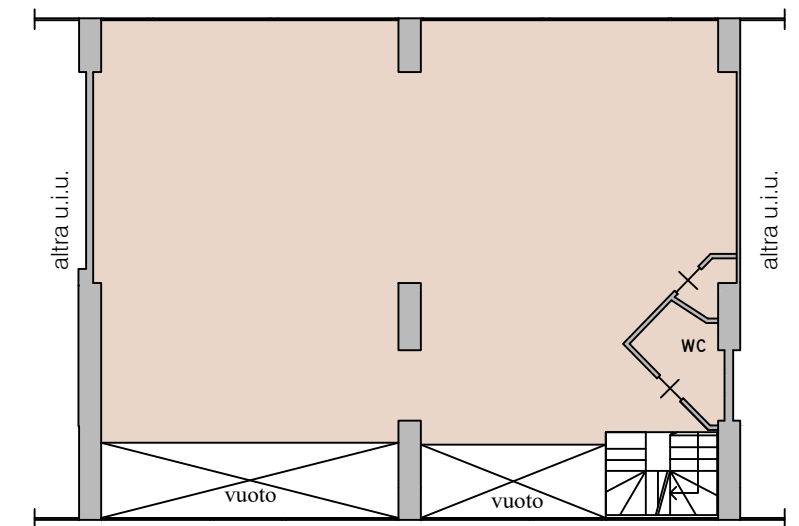
PIANO SOTTONEGOZIO



PIANO TERRA



PIANO SOPPALCO

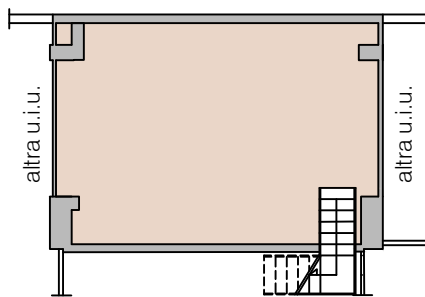




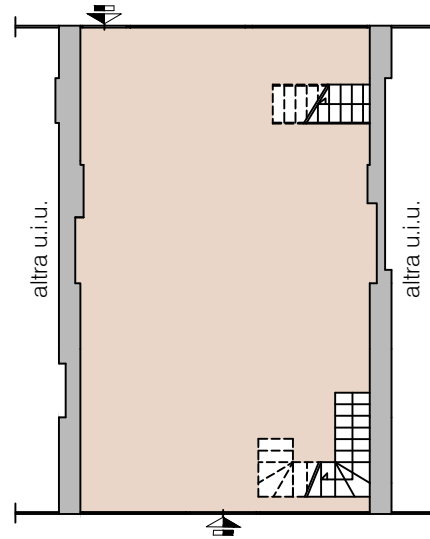
Napoli  
Centro Direzionale - Isola "G5"  
Locale Commerciale  
Piani Terra, Sottonegozio e Soppalco  
Ipotesi 200 mq



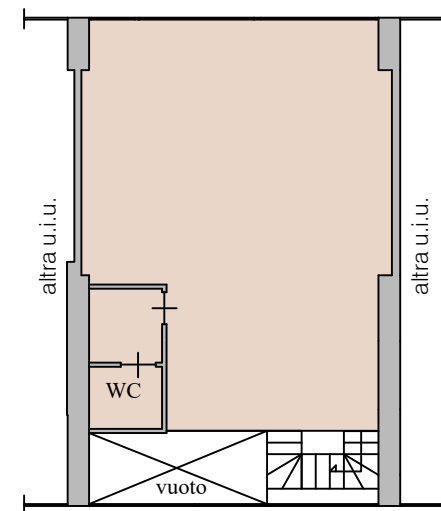
PIANO SOTTONEGOZIO



PIANO TERRA



PIANO SOPPALCO

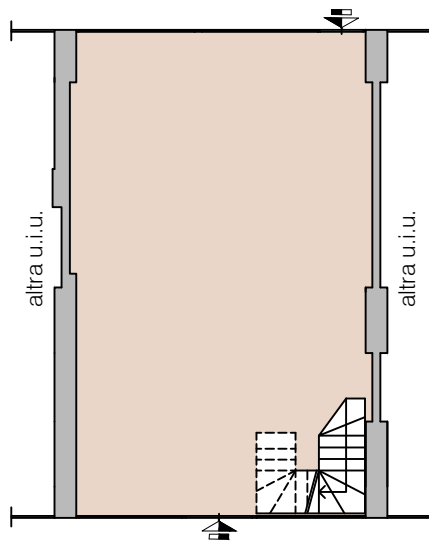




Napoli  
Centro Direzionale - Isola "G5"  
Locale Commerciale  
Piani Terra e Soppalco  
Ipotesi 150 mq



PIANO TERRA



PIANO SOPPALCO

